

## Fixturing Options for Single Ended Probes

Three possible options for mounting the single-ended design probes, including the A1520, A1540, and B2502 series probes exist to eliminate intermittent interface contact.

In the first method (Fig. 1), the socket body is machined to the same thickness as the probe's barrel length. Mounting the socket to the interface board tightly fixes the interface contact.

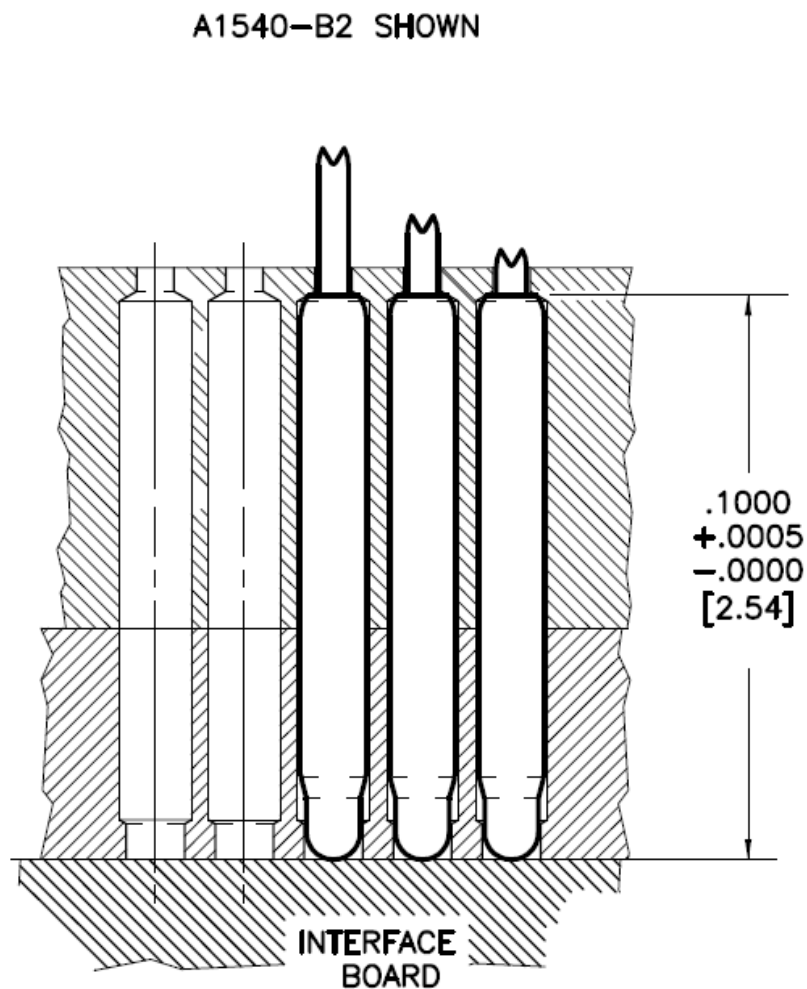


Figure 1

In the second method (Fig. 2), an elastomeric layer is added to provide a compliant contact onto the interface board.

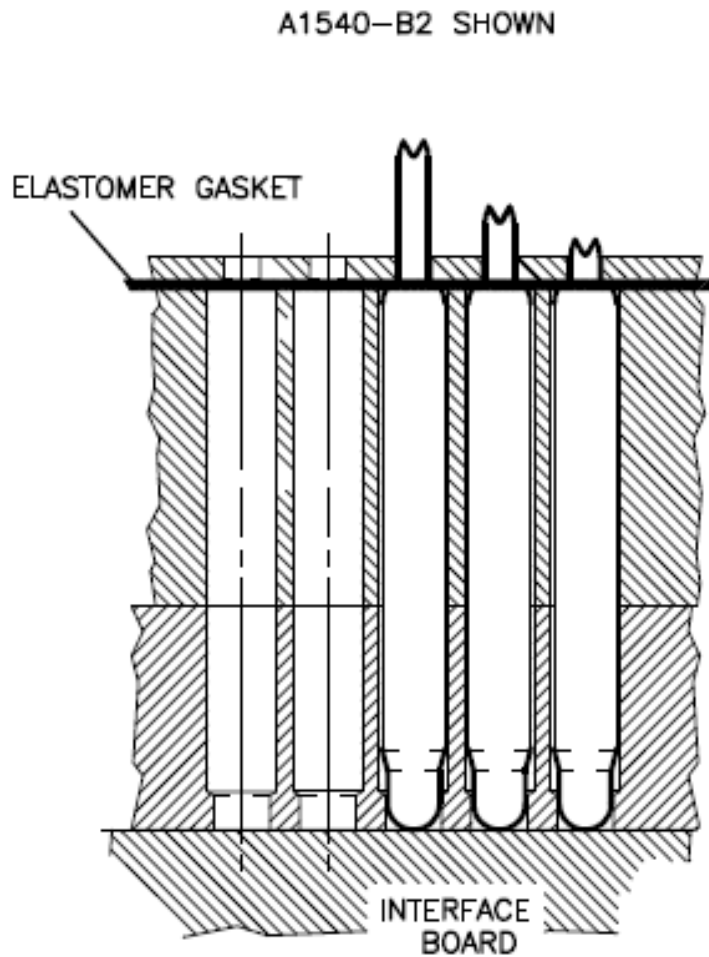
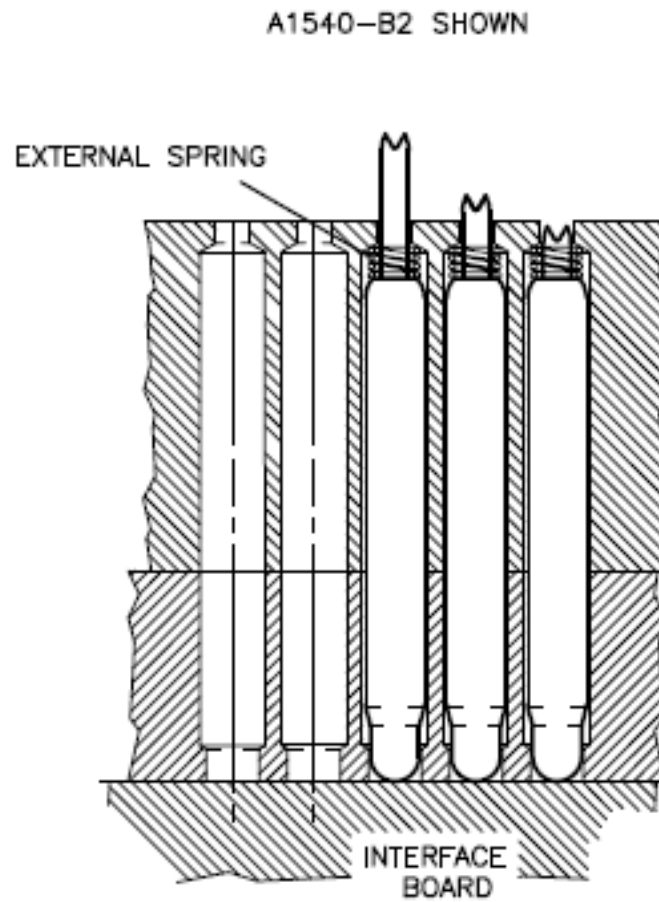


Figure 2

The third scheme (Fig. 3), uses a spring to force the probe against the interface



**Figure 3**